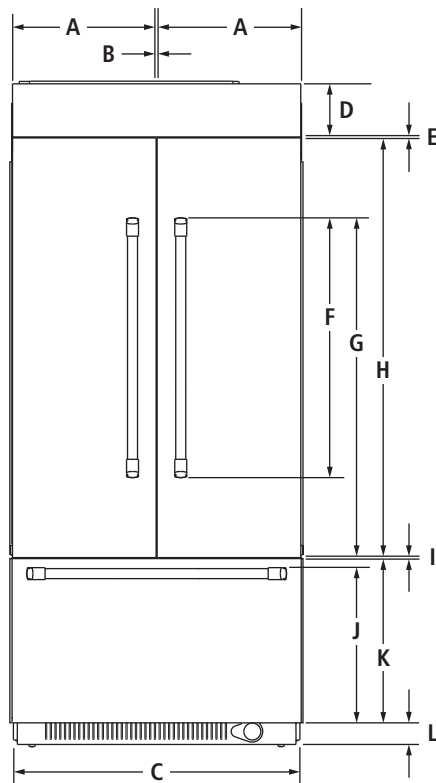


36" FULLY INTEGRATED FRENCH DOOR REFRIGERATOR

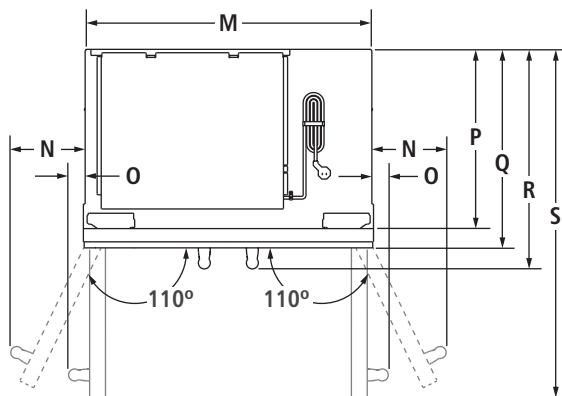
(BASE UNIT REQUIRES SUITE-COORDINATING PANEL KIT OR CUSTOM PANELS AND HANDLES)

JF36NFXDE – 35¾" x 83⅛" x 24" (without door/handles)

PRODUCT DIMENSIONS



FRONT VIEW



TOP VIEW

MODEL #		JF36NFXDE	
		in	cm
A	Width of each door	17 ⁵ / ₈	44.8
B	Space between doors	1 ¹ / ₈	0.3
C	Overall width	35 ³ / ₄	90.8
D	Height of top grille and bracket	6 ¹ / ₂	16.5
E	Space between doors and top grille	3 ³ / ₈	0.8
F	Height of door handles Pro-Style® Stainless	32 ³ / ₈	82.2
	Euro-Style Stainless	37 ⁷ / ₈	96.0
G	Height to top of door handles Pro-Style® Stainless	42 ³ / ₈	107.6
	Euro-Style Stainless	44 ⁷ / ₈	114.0
H	Height of doors	52 ³ / ₈	133.0
I	Space between doors and drawer	1 ¹ / ₈	0.3
J	Height to top of drawer handle Pro-Style® Stainless	19 ³ / ₈	49.2
	Euro-Style Stainless	19 ¹ / ₄	48.7
K	Height of drawer	20 ¹ / ₂	52.1
L	Height of bottom grille	3	7.6
M	Width of recessed refrigerator	35	88.9
N	Width from side of refrigerator to handle – door fully open 110° Pro-Style® Stainless	7	17.8
	Euro-Style Stainless	6 ¹ / ₂	16.5
O	Width from side of refrigerator to handle – door open 90° Pro-Style® Stainless	2	5.1
	Euro-Style Stainless	1 ¹ / ₂	3.9
P	Depth without door panel kit	24	61.0
Q	Depth with doors Pro-Style® Stainless panel kit	24 ³ / ₄	62.9
	Euro-Style Stainless panel kit	24 ³ / ₄	62.9
	Custom panel (¾"/1.9 cm)	24 ³ / ₄	62.9
R	Depth with handles Pro-Style® Stainless	27 ³ / ₈	69.5
	Euro-Style Stainless	26 ⁷ / ₈	68.3
S	Depth with doors open 90°	41	104.1

IMPORTANT: Dimensional specifications are provided for planning purposes only.

Do not make any cutouts based on this information. Refer to the Installation or Use & Care Guide before selecting cabinetry, verifying electrical/gas connections, making cutouts or beginning installation.

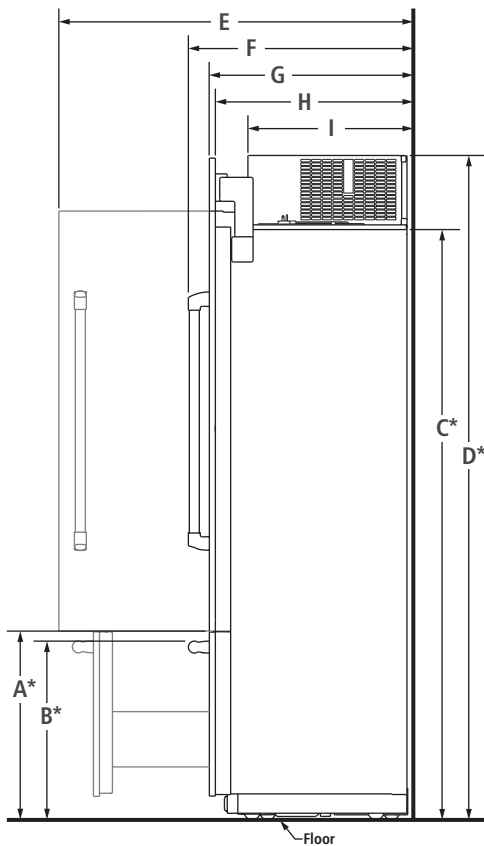
All Jenn-Air® appliances are appropriately UL, CUL or CSA approved.

36" FULLY INTEGRATED FRENCH DOOR REFRIGERATOR

(BASE UNIT REQUIRES SUITE-COORDINATING PANEL KIT OR CUSTOM PANELS AND HANDLES)

JF36NXFXDE – 35³/₄" x 83¹/₈" x 24" (without door/handles)

DIMENSIONS AS INSTALLED



SIDE VIEW

MODEL #		JF36NXFXDE	
		in	cm
A*	Height to top of drawer (min.)	23 ¹ / ₂	59.7
	Height to top of drawer handle (min.)		
B*	Pro-Style® Stainless	22 ³ / ₈	56.8
	Euro-Style Stainless	22 ¹ / ₄	56.3
C*	Height to top of doors (min.)	74 ³ / ₈	188.9
D*	Height to top of grille and bracket (min.)	83 ¹ / ₈	211.1
E	Depth with door open 90° (min.)	41	104.1
	Depth with handles (min.)		
F	Pro-Style® Stainless	27 ³ / ₈	69.5
	Euro-Style Stainless	26 ⁷ / ₈	68.3
G	Depth with doors (min.)		
	Pro-Style® Stainless panel kit	24 ³ / ₄	62.9
	Euro-Style Stainless panel kit	24 ³ / ₄	62.9
	Custom panel (¾"/1.9 cm)	24 ³ / ₄	62.9
H	Depth without door panel kit (min.)	24	61.0
I	Depth of compressor (min.)	19 ⁷ / ₈	50.5

*Add 1¹/₄" (3.2 cm) to the height dimension when leveling legs are fully extended.**IMPORTANT:** Dimensional specifications are provided for planning purposes only.

Do not make any cutouts based on this information. Refer to the Installation or Use & Care Guide before selecting cabinetry, verifying electrical/gas connections, making cutouts or beginning installation.

All Jenn-Air® appliances are appropriately UL, CUL or CSA approved.