



AGArangeusa.com

# THE AGA CASCADE HOOD



## SPECIFICATIONS

**Hood Style**  
Concave

## Product Dimensions:

### *Hood Width x Depth x Height*

36"W x 24"D x 30"H (600 cfm/8" collar)

48"W x 24"D x 30"H (1200 cfm/10" collar)

## Duct Cover Options

12", 24" and 48" Tall

*Custom Duct Cover heights are available*

## Product Weight:

36"(30"H) : 97 lbs

48"(30"H) : 124 lbs

## MODELS:

36" : AH3630CAC

48" : AH4830CAC



*Hood also available without Banding*

## Electrical Requirements:

600 CFM models draw approx. 2.7 Amps

1200 CFM models draw approx. 5.4 Amps

## COLOR FINISH OPTIONS

### CLASSIC COLOR COLLECTION



Stainless Steel (SS)



Matte Black (MBL)



White (WHT)



Gloss Black (BLK)



Indigo (IND)



Cornwall Green (CWG)

### SOHO COLOR COLLECTION



Slate (SLT)



Stone Blue (STB)



Mineral Green (MG)



Carnaby Blue (CBB)



Fawn (FWN)



Piccadilly Red (PCR)



Salcombe Blue (SAL)



Cranberry (CNB)

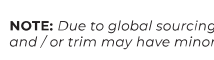
## TRIM FINISH OPTIONS



Brushed Nickel (BN)



Polished Chrome (PC)



Antique Brass (AB)



Brushed Brass (BB)



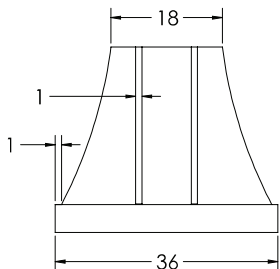
Polished Brass (PB)



Antique Brass (AB)

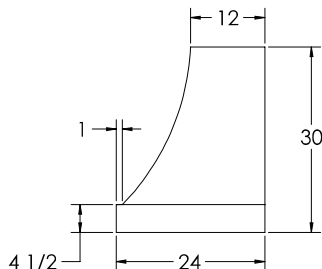
**NOTE:** Due to global sourcing, paint and / or trim may have minor variations

## DIMENSIONAL DRAWINGS



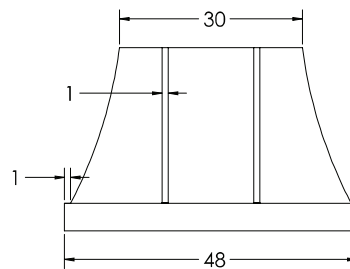
**36" FRONT VIEW**

*Hood also available without Banding*



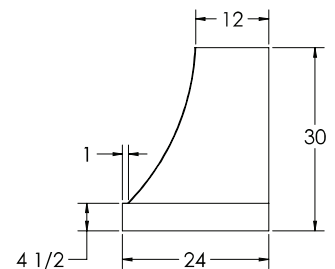
**36" SIDE VIEW**

*Hood also available without Banding*



**48" FRONT VIEW**

*Hood also available without Banding*



**48" SIDE VIEW**

*Hood also available without Banding*



# THE AGA CASCADE HOOD

## PRODUCT FEATURES

### Quiet Operation

Large 3 speed blower operates at lower RPM reducing the sound level.

### Lighting

Bright LED lighting offers natural looking, 3000K color spectrum. The 36" hood features 2 lights, the 48" hood features 3 lights.

### Ease of Operation

Electronic touch controls for 3 speed blower and LED lights.

### Easy Cleaning

Dishwasher safe, commercial style baffle filters for effectively removing airborne contaminants.

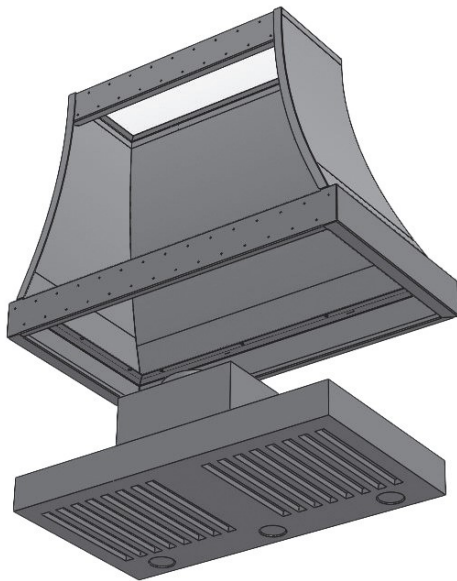
Detergent inlet holes and grease exit holes in baffle filters for superior dishwasher cleaning.

### Flexible Installation

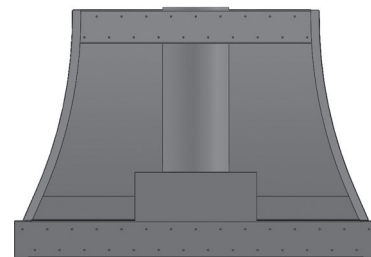
Mounting bars at top and bottom allow for attaching to stud supports. Open top and back design for centered duct location or offset top duct and/or rear offset discharge.

### Energy Efficient Operation

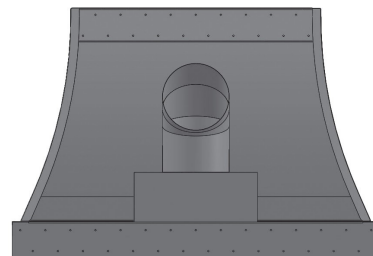
LED light bulbs draw only 6 watts each and energy efficient motors draw only 2.5 amps.



Rear view showing liner is easily removed and reinstalled for simply mounting of hood shell to the wall



Rear view of standard, centered top venting. Open top design allowing simple R/L offset top ducting



Rear view of standard, centered rear venting. Open back design allowing simple R/L offset rear ducting