

# Cuisinart®

ESPRESSO BAR™

## Fully Automatic Espresso Machine

EM-550 SERIES



Instruction  
& Recipe  
Booklet

For your safety and continued enjoyment of this product, always  
read the instruction book carefully before using.

# Important Safeguards

We at Cuisinart are very safety conscious. We design and manufacture consumer products with the safety of you, our valued customer, foremost in mind.

In addition we ask that you exercise a degree of care when using electrical appliances and adhere to the following precautions.

When using electrical appliances, basic safety precautions should always be followed, including the following:

1. **CAREFULLY READ ALL INSTRUCTIONS BEFORE OPERATING APPLIANCE AND SAVE FOR FUTURE REFERENCE.**
2. To protect against fire, electrical shock, and injury to persons, do not immerse the appliance, cord, or plug in water or any other liquid.
3. This appliance is for household use only.
4. Do not use this appliance for anything other than its intended use.
5. Do not leave the appliance unattended when in use.
6. Do not touch hot surfaces. Use handles or knobs.
7. Always use the appliance on a dry, level surface.
8. To disconnect, turn all controls off, then remove plug from power outlet.
9. Do not place this appliance on or near a hot gas or electric burner, or where it could touch a heated oven.
10. Do not let the cord hang over the edge of a table or counter, touch hot surfaces, or become knotted.
11. The use of accessory attachments not recommended by Cuisinart may cause a risk of injury to persons, fire, or electrical shock.
12. Strictly follow cleaning and care instructions.
13. Do not use outdoors.
14. An extension cord is not recommended. However, if one is needed, the extension cord should be a grounded type and its electrical rating must be the same or higher wattage as the appliance. Regularly inspect the supply cord, plug, and actual appliance for any damage. If damaged in any way, immediately cease use of the appliance and call Cuisinart Customer Service at 1-800-726-0190.
15. Refer servicing to qualified personnel.
16. Do not operate any appliance with a damaged cord or plug, or after the appliance malfunctions or has been damaged in any manner. Return appliance to the nearest authorized service facility for examination, repair, or adjustment.
17. Unplug from outlet when not in use and before cleaning. Allow to cool before putting on or taking off parts, and before cleaning the appliance.
18. Do not operate your appliance in an appliance garage or under a wall cabinet. **When storing in an appliance garage, always unplug the unit from the electrical outlet.** Not doing so could create a risk of fire, especially if the appliance touches the walls of the garage or the door touches the unit as it closes.
19. This appliance is not intended for use by persons (including children) with reduced physical, sensory, or mental capabilities, or lack of experience and knowledge, unless they have been given supervision or instruction concerning use of the appliance by a person responsible for their safety.
20. Children should be supervised to ensure that they do not play with the appliance.
21. The heating element surface is subject to residual heat after use.
22. Any servicing should be performed by an authorized service representative.
23. Scalding may occur if the lid is removed during the brewing cycle.
24. **Warning:** To avoid the risk of injury, do not open the brew chamber during the brew process.
25. To unplug, grasp the plug and pull from the outlet. Never pull from the power cord.
26. This appliance should not be used by or near children or individuals with certain disabilities.
27. Always attach plug to appliance first, then plug cord into the wall outlet. To disconnect, turn any control to "off;" then remove plug from wall outlet.
28. Avoid contacting moving parts. Do not attempt to defeat any safety interlock mechanisms.
29. Use the grinder for grinding coffee bean only.

# Save These Instructions For Household Use Only

## Warning: Risk of Fire or Electric Shock



The lightning flash with arrowhead symbol within an equilateral triangle is intended to alert the user to the presence of uninsulated dangerous voltage within the product's enclosure that may be of sufficient magnitude to constitute a risk of fire or electric shock to persons.



The exclamation point within an equilateral triangle is intended to alert the user to the presence of important operating and maintenance (servicing) instructions in the literature accompanying the appliance.

## Special Cord Set Instructions

1. A short power-supply cord (or detachable power-supply cord) is provided to reduce risks resulting from becoming entangled in or tripping over a longer cord.
2. Longer detachable power-supply cords may be used if care is exercised in their use.
3. If a long detachable power-supply cord is used:
  - The marked electrical rating of the detachable power-supply cord should be at least as great as the electrical rating of the appliance;
  - If the appliance is of the grounded type, the cord should be a grounding-type 3-wire cord;
  - The longer cord should be arranged so that it will not drape over the counter top or table top where it can be pulled on by children or tripped over.

## Notice

When brewing coffee into a travel mug, you will need to remove the drip tray.

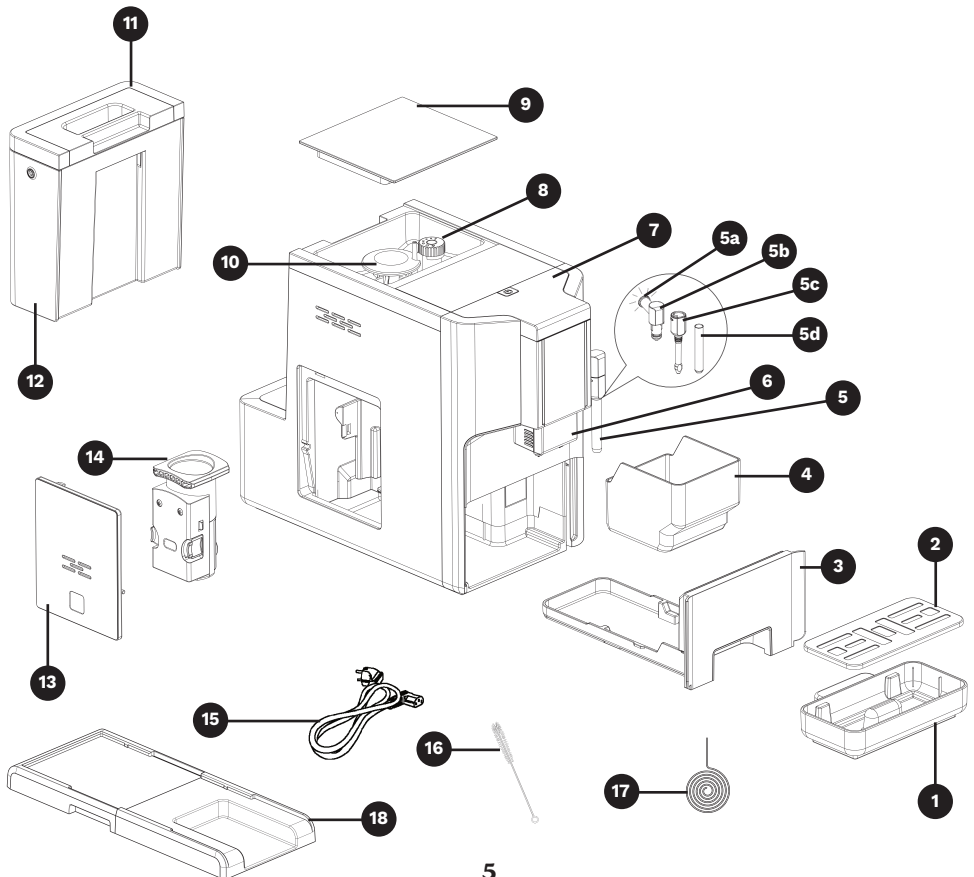
**Note:** There may be water found in the drip tray as a result from normal brewing.

# Table of Contents

Important Safeguards .....	2
Special Cord Set Instructions.....	3
Features and Benefits.....	5
Getting to Know Your Control Panel.....	6
Machine Installation.....	7
Daily Operation .....	7
Daily Cleaning of the Coffee Machine.....	9
Mode Selection.....	12
Cleaning & Maintenance .....	13
Cleaning the Appliance.....	13
Troubleshooting.....	15
Warranty .....	16
Notes.....	18














# Features and Benefits

- 1. Removable Drip Tray**  
Removes for easy cleaning and to accommodate up to a 20 oz. travel mug.
- 2. Removable Drip Tray Plate**
- 3. Internal Drip Tray**
- 4. Waste Container**  
Collects used grounds for easy cleanup.
- 5. Steam & Hot Water Wand**  
Steams milk for cappuccinos and lattes or dispenses hot water.
  - 5a. Steam Light Indicator**
  - 5b. Nozzle Cover**
  - 5c. Steam Nozzle**
  - 5d. Metal Tube**
- 6. Brew Head with Coffee Spout**  
Height-adjustable dispenser slides up and down to accommodate various cup sizes.
- 7. Touchscreen Control Panel**  
See detailed illustration on next page.
- 8. Grind Control Knob**  
Adjusts the fineness level for grinding.
- 9. Bean Hopper with Lid**  
Holds up to 150g amount of coffee beans.
- 10. Conical Burr Mill** (not shown)
- 11. Water Reservoir Lid**
- 12. 1.5-Liter (50-Ounce) Water Reservoir**  
Removable for easy filling.
- 13. Brewing Unit Door**
- 14. Brewing Unit**
- 15. Cord/Outlet**
- 16. Cleaning Brush**
- 17. Needle**
- 18. Separate Base**  
Elevates unit on countertop to accommodate brewing into travel mugs.
- 19. 19 Bar Pump** (not shown)  
19 bars of pressure for balanced extraction.



# Getting to Know Your Control Panel



ICON		DESCRIPTION
1.		<b>Power/Off Button</b> Use to turn the espresso maker on and off. This button will illuminate the control panel indicators and buttons.
2.		<b>Indicators</b> Appear when unit is not ready to brew and needs attention.
2a.		<b>Add Water Indicator</b> Flashes when water level is low or the reservoir is not in place on the unit.
2b.		<b>Add Beans Indicator</b> Flashes when it is time to add beans to the hopper.
2c.		<b>Waste Container Indicator</b> Illuminates when the grounds container is full and needs to be emptied. <b>Note:</b> Indicator will flash when container is not in place. <b>Note:</b> When accumulated to 10 cups, will light up, which indicates that the coffee ground container needs to be emptied. After removing the coffee grounds box for a few seconds, will light off and enter the next 10-cup cumulative cycle.
2d.		<b>Brewer Missing</b> Illuminates when brewing unit is missing or not installed correctly. Icon will flash when brewing door is open or missing, indicating it must be closed.
2e.		<b>Clean/Descale Indicator</b> Illuminates then it is time to descale the unit. Icon will flash when a descaling cycle is activated.
2f.		<b>Rinsing Indicator</b> Flashes when unit is running a rinse cycle to prepare the machine for brewing. <b>Note:</b> This is an automatic process.
3.		<b>Buttons</b> Press to activate desired function.
3a.		<b>Cold/Ambient Brew</b> Used to activate cold extraction function.
3b.		<b>Hot Water</b> Use to dispense hot water from the steam/hot water wand.
3c.		<b>Steam</b> Use when steaming milk for making cappuccinos and lattes with the steam wand.
3d.		<b>Single Shot</b> Use for a single serving of espresso – 1.0 ounces.
3e.		<b>Double Shot</b> Use for a double serving of espresso – 2.0 ounces
3f.		<b>Americano</b> Use to brew an Americano-style beverage

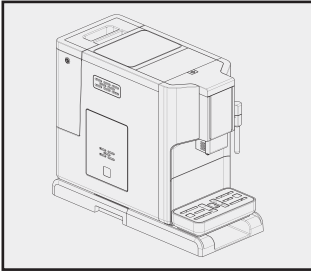
## Accessory

In the box, three packs of cleaning agents are included for the process of descaling.

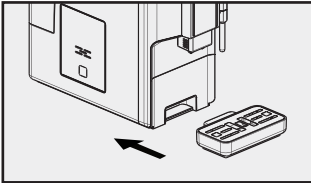
## Machine Installation

1. Remove any protective films, stickers, and other packing materials on the appliance.
2. Choose a safe and stable surface with an easily reachable power supply. Allow minimum distances from the sides of machine.

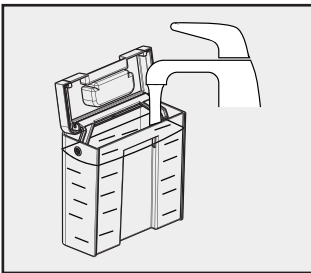
\*\*The extended base adds height to allow brewing into a travel mug.



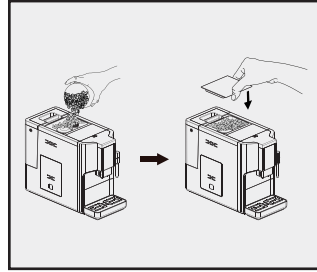
3. Insert the external drip tray to the machine until it is secured.



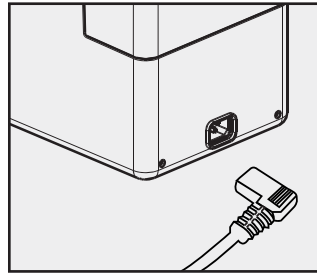
4. Fill the water tank with water (see “Filling Water Tank”).




5. Fill the container with coffee beans (see “Filling Bean Container”).




6. Unwind and straighten the power cord. Insert the plug into socket located on the back of machine, and the other end of power cord to wall socket with correct power voltage.



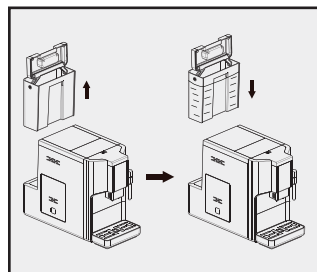
**Note:** Press Hot Water button  (see “Manual Rinsing”) to clean inside of the coffee machine before the first use.

## Daily Operation

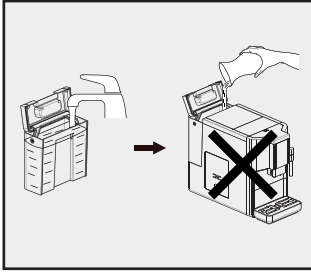
### Filling the Water Tank

When  is flashing, the water tank needs to be filled.

1. Lift the water tank using the lid as handle.
2. Rinse the water tank with fresh water. Fill the tank to the Max level and place it back into the machine. Make sure it is installed properly.




**Note:** To prevent the risk of overflowing the water tank, do not add water directly into the appliance.

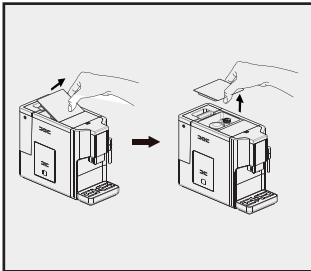


**Important:** Never fill the water tank with warm, hot, or sparkling water, or other liquids, which may damage the water tank and machine.

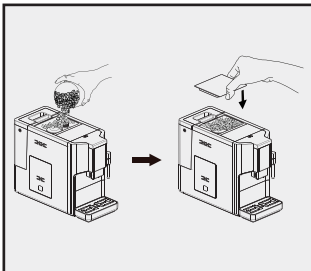
## Filling the Bean Container

When  is flashing, the appliance needs coffee beans:

1. Remove the bean container lid.
2. Fill the bean box with coffee beans.





3. Install the container lid.

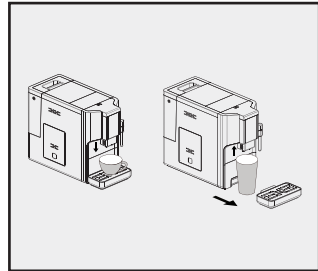




**Important:** Fill the bean container with coffee beans only. Ground, instant, caramelized coffee, or other objects may damage the machine.

## Preparing Your Coffee

**Note:** Before first use, run the Hot Water cycle one time to clean inside of the coffee maker.

1. Turn on the appliance by pressing the Power ON/OFF button . Make sure the drip tray is under the coffee spout and water tank is filled. The appliance will perform auto-rinsing on steam nozzle and then coffee nozzle for a small cup of water. You can stop it by pressing Hot Water button .
2. The appliance is then in standby mode.
3. Place a cup under the coffee spout and adjust the height of spout to fit the cup. Depending on the cup size (too tall or too wide), the drip tray can be removed or adjusted as shown below:



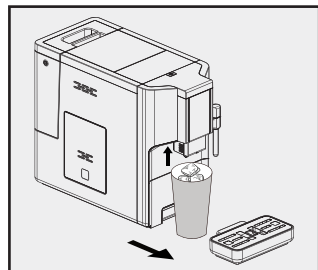
4. Choose your coffee flavor by pressing Espresso  or Americano .
5. The coffee button pressed will light up, and the brewing coffee indicator and illumination under spout will light up, indicating that the appliance is preparing the cup of coffee. You can stop dispensing coffee by pressing the button again.
6. When the appliance is back to standby mode, the coffee is ready to serve.


**TIP:** Espresso brews stronger coffee. The coffee strength can be adjusted (see “Adjusting Coffee/Hot Water Volume”).

## Preparing Ambient Brew Coffee


You can prepare Ambient Brew coffee with a single press.

1. Put a glass with ice under the spout.



2. Press Ambient Brew button . Both the Ambient brew button and indicator light up, indicating the

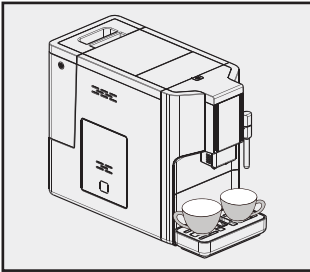
appliance is preparing the cup of coffee. Coffee will be dispensed and complete in under 5 minutes.


3. Preparation will stop automatically. If you want to stop dispensing coffee during operation, press the Ambient Brew button  again.

**Note:** When brewing using the Ambient Brew feature, the coffee volume cannot be adjusted by the user.

## Preparing Two Cups of Espresso


You can prepare two cups of espresso with one button press.

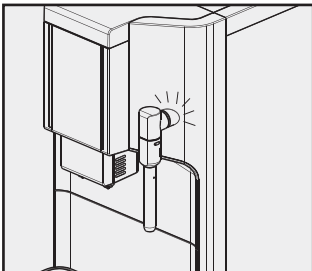


1. Put one cup under the spout or two small cups under each side of the spout.
2. Press Espresso x2 button . Both Espresso x2 button and indicator light up, indicating the appliance is brewing the espresso. Two cups of coffee will be dispensed consecutively.
3. Preparation will stop automatically. If you want to stop dispensing coffee during operation, press the button again.



## Preparing Frothy Milk for Coffee

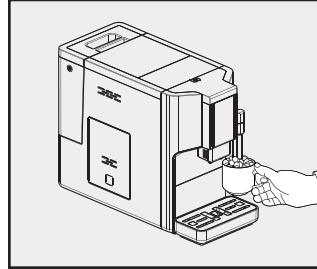
As the temperature of steam is higher than that of espresso, espresso should be prepared before frothy milk; otherwise your espresso might be burnt.

1. Prepare the espresso in a larger cup. Turn the steam nozzle toward the drip tray.
2. Press the Steam button . The steam indicator light will flash, indicating the appliance is heating




up. Drain the residual water into external drip tray or another container.

3. When the espresso maker is ready, the Steam button and indicator light will stay on. Prepare a container with milk. Place the container under the steam nozzle and immerse the steam nozzle about 2 inches deep into the milk.
4. Press the Steam button  again. Swirl the container while the hot steam is coming out. As the milk heats, froth will form. When the milk is frothy, press the Steam button  to stop.



5. Pour the hot frothy milk into the espresso.
6. Use a wet towel to clean the nozzle cover and metal tube (see “Daily Cleaning of the Coffee Machine”).

## Preparing Hot Water

1. Put a cup under the steam nozzle.
2. Press Hot Water button . Both Hot Water button and indicator light up, indicating the appliance is heating up water.
3. Preparation will stop automatically. If you want to stop hot water during operation, press the button again.

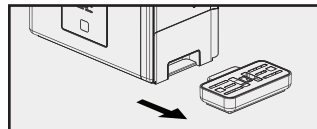
## Daily Cleaning of the Coffee Machine

Daily cleaning and maintenance are important and will prolong the life of your espresso maker.

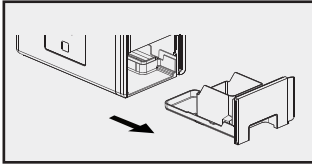
### Cleaning the Drip Tray and Coffee Grounds Container

Empty and clean the drip tray every day.

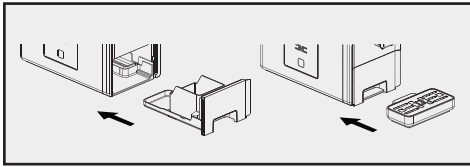
1. Pull the external drip tray out of the machine. Empty the water in the drip tray and rinse with fresh water. Dry and then replace in the espresso maker.





- Slide open the internal drip tray and coffee grounds container. Empty the coffee grounds container and rinse with fresh water. Dry and then replace in the espresso maker.



- Secure the external drip tray at its original position.

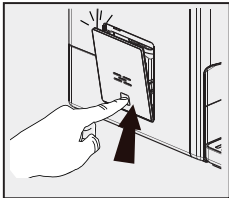


**Note: When the coffee grounds container is full,  will light up, which indicates that the container needs to be emptied.**

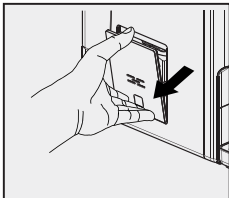
**After the coffee grounds are removed and emptied,  will turn off and reset.**

## Cleaning the Brewer

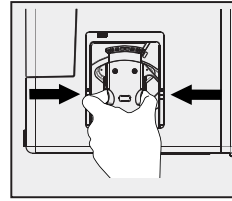
- Lightly press the bottom of service door to open it.



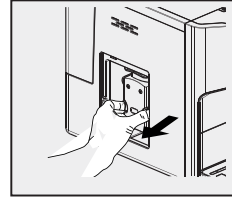
- Remove the service door from machine.





- Press the release knob on the brewer and remove from the machine. Rinse under warm running water.

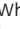


- Insert the brewer back to its original position. Put the service door back on the machine.



**Note:** When  lights up solid, it indicates that the brewer is missing / installed improperly.

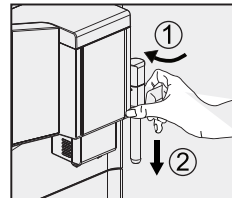
When  is flashing, it indicates that the service door is missing/installed improperly.

When  is flashing, the coffee grounds container is missing.

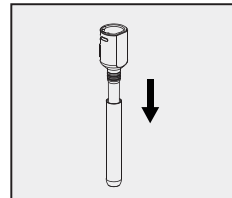
**Warning:** Do not remove the brewer until the gear position returns to idle position after use.

## Cleaning the Steam Wand

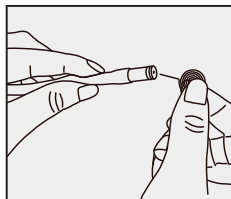
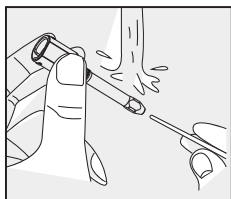
- Unlock the nozzle cover by turning to left. Pull it downward to remove.



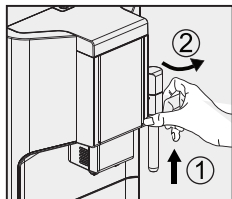
- Pull the metal tube downward to disassemble from the nozzle cover.



- Wash both the nozzle cover and metal tube with warm running water. Use needle or bristle brush to clean the hole.




4. Put the metal tube back on the nozzle cover. Push the assembly upward to the steam nozzle, and turn it right to lock it.



## Cleaning the Water Tank

1. Lift the water tank out of the machine and rinse with fresh water.
2. Fill it to the Max level. Put it back in the machine.

## Turning Off the Machine

Switch off the appliance by pressing the Power ON/OFF  button.

## Automatic Shutoff

The appliance is equipped with auto shutoff. Depending on the mode you selected, the appliance will have different auto shutoff times (see “Mode Selection”).

## Further Setting

### Adjusting the Coffee/Hot Water Volume

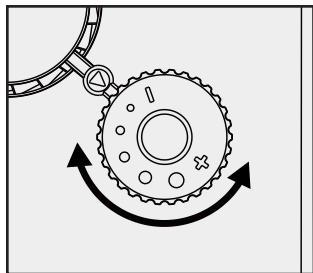
The machine can memorize your desired volume of espresso, Americano, and hot water.

1. When making your coffee (either espresso or Americano) or dispensing hot water, press and hold the respective button. The appliance will continue to make the cup of coffee or hot water.
2. When the volume of coffee or hot water meets your desired volume, release the button. Two beeps indicate the volume of coffee has been memorized. For double espresso, the volume of the first and second cup are the same.

## Grinding Adjustment

You can adjust the grinder to choose different coffee roast levels by turning the adjuster knob in the bean container. The dots on adjuster knob indicate the fineness of the grind.

When the grinder is grinding coffee beans, you can turn the adjuster knob to change the fineness.



**Warning:** Never adjust the grinder when it is not operating. It may damage the grinder.


## Mode Selection




The machine has three different settings: default setting, ECO mode, and speed mode. In ECO mode, the appliance helps to save energy. In speed mode, you can make your coffee faster than in default setting.





When the grinder is grinding coffee beans, you can turn the adjuster knob to change the fineness.

	Speed Mode	Default Setting	ECO Mode
<b>Illumination light</b>	yes	yes	no
<b>Pre-brewing*</b>	no	yes	yes
<b>Auto shutoff time</b>	30 minutes	20 minutes	10 minutes
<b>Cup volume memory</b>	yes	yes	yes

**Note: The pre-brewing function moistens the ground beans in the brewer with a small amount of water before full extraction. This expands the coffee grounds to build up greater pressure in the brewer, which helps extraction of all the oils and full flavor from the ground beans.**


1. When the machine is in standby mode, press and hold  for 5 seconds.
2. Buttons will show following indications under different settings:

	Espresso Button 	Americano Button 	Hot Water Button 
<b>In Speed Mode</b>	on	flashing	flashing
<b>In Default Setting</b>	flashing	on	flashing
<b>In ECO Mode</b>	flashing	flashing	on

3. Press Espresso button  in speed mode, Americano button  in default setting, and Hot Water button  in ECO mode. Two beeps indicate that the mode is being selected.
4. If you would like to keep factory settings, press the Power ON/OFF button  again or wait for 5 seconds for the machine to return to standby mode.



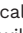




# Cleaning & Maintenance

## Descaling




When  lights up solid, it indicates that the appliance needs to undergo descaling. The espresso maker will work at its best if it is descaled at least once a month or more regularly, depending on the hardness of water used.

1. Fill the water tank to Max level.
2. Add one pack of cleaning agent to the water tank.

**Important: Do not use vinegar or other cleaning agents to descale this appliance. Other cleaning agents might damage the appliance**

3. Plug in the appliance.
4. Place a sufficiently large container under the coffee spout.
5. In standby mode, press and hold the Power ON/OFF  and Espresso buttons  for 5 seconds. Two beeps will sound, and the the Clean/Descaling indicator  and the Espresso button  will flash.
6. Press the Espresso button  to start descaling. To resume standby mode, press the Power ON/OFF button .
7.  will flash, indicating that the appliance is undergoing the descaling process.


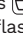

**Warning:** Do not touch the hot water.

8. When the water tank is almost empty,  and the Espresso button  will flash. Discard any remaining solution in the water tank, and then fill the tank with tap water to Max level. When the water tank is full,  will go off. The appliance will continue the descaling process.
9. When descaling process is completed, the appliance will switch off automatically.

**Note: Be sure to allow the descaling cycle to run completely.**

## Empty System Function

The empty system function is recommended before storing, for frost protection, or before taking for repairs.




1. In standby mode, press and hold the Power ON/OFF  and Americano buttons  for 5 seconds. The Rinsing icon  will flash.
2. Remove the water tank from the appliance. Then the empty system begins. The steam nozzle will dispense a small amount of water.
3. When the empty system function is completed, the appliance will switch off automatically.

**Important: After performing the empty system function, press the Hot Water button  until water**

**dispenses from the steam nozzle when the machine is used again.**

## Manual Rinsing

You can perform a manual rinsing cycle to clean the coffee nozzle after use, or after the appliance has not been used for a long period of time.

1. In standby mode, press and hold the Power ON/OFF  and Hot Water buttons  for 5 seconds.
2. The Hot Water button  will flash. The coffee nozzle will dispense a small amount of water.

**Warning: Hot water will be dispensed from coffee spout into external drip tray. Avoid contact with splashing water.**

3. After rinsing, the appliance will return to standby mode.

## Cleaning the Appliance

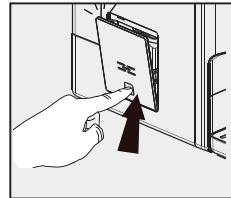
1. Disconnect the power cord from the outlet.
2. Discard all water in both the internal and external drip trays.
3. Use a damp cloth or nonscratching cleaner to clean water stains on the appliance.

**Important: Never use any abrasive, vinegar, or descaling agents not included in the box to clean the appliance.**

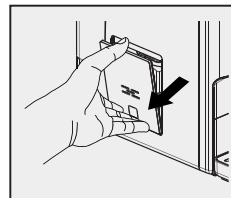
## Cleaning the Coffee Powder Outlet

Coffee grounds may adhere to the wall of the powder outlet. Cleaning the outlet ensures that ground coffee can be delivered to the brewer.

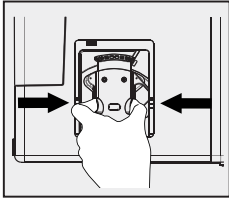
1. Push the recessed area of the service door.



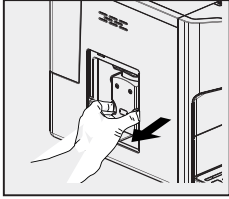
2. Take out the service door.



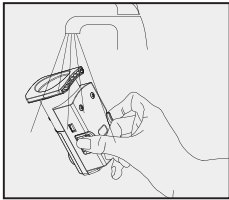
3. Press the release knob of the brewer.



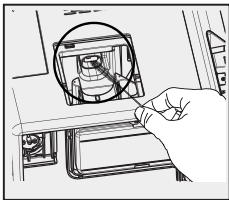
4. Take the brewer out.



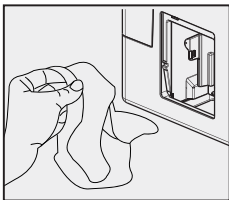
5. Rinse the brewer under running water. Let it dry completely before reassembling the machine.



6. Use the cleaning brush to clean the powder outlet and remove any coffee grounds or residue from the machine.




7. Use the included cloth to clean the inside of the machine thoroughly. Dry completely before closing the side door.



**Warning: Do not take out the brewer until the gear position returns to the idle position after use.**

# TROUBLESHOOTING

PROBLEM	CAUSE	SOLUTION
The appliance does not work.	The appliance is not connected properly.	Plug in and press the Power ON/OFF button. Check the cable and the plug.
No or delayed response after several attempts to use the function buttons on the panel.	Appliance is under electromagnetic interference. Dirt over the panel.	Unplug the appliance. Restart after a few minutes. Clean the panel with the cloth provided.
The coffee is not hot enough.	The cups have not been preheated. The brewing unit is too cold.	Rinse the appliance at least 3 times before making the coffee.
The coffee cannot come out of the spout.	Empty system function may have been used before.	Press the Hot Water button until water comes out of the spout.
The first cup of coffee is poor quality.	The first run of the grinder does not produce enough ground coffee for the brewing unit.	Throw the coffee away. Subsequent cups will be better.
Coffee has no crema.	Coffee beans are not fresh.	Change or use appropriate brand of coffee bean.
Touch buttons are not responding.	Not pressing the buttons from the front of the appliance.	Press the lower bottom part of the icon of the button from the front of the appliance.
The appliance takes too long time to warm up.	Excessive scale has built up.	Descale the appliance.
The water tank is removed/the water level is very low in the water tank but  has no alert.	The area near the water tank connector is wet.	Dry around the water tank connector.
Internal drip tray is filled with a lot of water.	Coffee powder is too fine, which blocks the water coming out.	Adjust the coffee fineness to less fine grind during grinder operation.
Coffee is delivered too slowly or a drop at a time.	Coffee powder is too fine, which blocks the water coming out.	Adjust the coffee fineness to less fine grind during grinder operation.
Lack of coffee bean indicator flashes but there are still a lot of coffee beans inside the container.	Internal coffee powder outlet is blocked.	Follow the steps in Cleaning Coffee Powder Outlet
Descaling indicator keeps flashing even after the descaling process.	Descaling process is not completed.	Wait for the process to finish. The machine will shut off automatically. Do not switch off the machine manually.
Milk foam cannot be created by steam nozzle.	The nozzle is dirty, or the hole on the nozzle cover or metal tube is blocked by milk residue.	To follow the steps in Daily Cleaning of the Coffee Machine to clean steam nozzle.

# Limited Warranty

Subject to the exclusions and limitations contained herein, Conair LLC dba Cuisinart (“Cuisinart”) warrants that the Cuisinart® Espresso Bar™ Fully Automatic Espresso Machine (“Product”) will be free from material defects in materials and workmanship under normal home use conditions for a period of ONE (1) year beginning on the date the Product was purchased in its original, sealed packaging, unless otherwise specified in this Limited Warranty. This Limited Warranty is only for U.S. consumers (defined herein as purchasers at retail for personal, family, or household use) who originally purchase the Product from Cuisinart or an authorized Cuisinart® reseller (if you are unsure whether a retailer or other point of sale is an authorized or unauthorized Cuisinart reseller, contact Cuisinart).

## **This Limited Warranty does NOT cover:**

- Normal wear and tear;
- Any Product purchased by commercial purchasers or for commercial or nonhousehold uses;
- Accessories, parts, or software added to the Product after the system is shipped from Cuisinart;
- Any costs associated with the replacement or repair of the Product, including labor, installation, or other costs incurred by you without prior Cuisinart approval;
- Damage to the Product, defective conditions, or nonconformities due to: (1) external causes, including shipping, accidents, problems with electrical power (Product designed only for use with 120-volt outlets), abnormal conditions (such as mechanical or environmental); (2) usage not in accordance with Product instructions; (3) misuse, neglect, unauthorized alteration, unauthorized repair; and (4) acts of God or other events beyond Cuisinart’s control;
- Though necessary repairs and maintenance might be performed by any company, damage caused by you or any nonauthorized third party may void this Limited Warranty;
- Damage caused by accessories or replacement parts not specifically authorized by Cuisinart may void this Limited Warranty; and
- Any Product where the original Product identification markings (trademark or serial number) have been removed, altered, or obliterated from the Product.

It is recommended that you visit the website <https://www.cuisinart.com/register-your-product.html> for a fast, efficient way to complete your product registration. However, product registration does not eliminate the need for the consumer to maintain the original proof of purchase in order to obtain the warranty benefits. In the event that you do not have

proof of purchase date, the purchase date for purposes of this Limited Warranty will be the date of manufacture.

## **HASSLE-FREE WARRANTY**

If the Product that is the subject of this Limited Warranty fails during the warranty period for reasons covered by this Limited Warranty, Cuisinart will, at its option, repair the Product, replace the Product with another identical or reasonably equivalent product, or if Cuisinart is unable to repair or replace the Product, refund the purchase price, less the amount directly attributable to the consumer’s prior usage of the Product. To obtain a return shipping label, email us at <https://www.cuisinart.com/customer-care/product-assistance/product-inquiry/>, or call our Consumer Service Center toll-free at **1-800-726-0190** to speak with a representative.

Upon receipt of the Product, Cuisinart will inspect the Product and, if required under this Limited Warranty, attempt to repair, replace, or refund the Product within thirty (30) days. However, there may be delays beyond Cuisinart’s control, in which case that time period may be extended as reasonably necessary.

**Important:** If the nonconforming Product is to be serviced by someone other than Cuisinart’s Authorized Service Center, please remind the servicer to call our Consumer Service Center at **1-800-726-0190** to ensure that the problem is properly diagnosed, the Product is serviced with the correct parts, and the product is still under warranty.

## **CALIFORNIA RESIDENTS ONLY**

The ONE (1) year Limited Warranty period begins on the date the Product was delivered, which may be different than the date the Product was purchased. California residents also have the option of obtaining the benefits of this Limited Warranty by bringing the Product to (A) the store where it was purchased or (B) another retail store that sells Cuisinart products of the same type. The retail store shall then, according to its preference, either repair the Product, refer the consumer to an independent repair facility, replace the Product with another identical or reasonably equivalent product, or refund the purchase price less the amount directly attributable to the consumer’s prior usage of the Product. California residents may also, according to their preference, return nonconforming products directly to Cuisinart for repair or, if necessary, replacement with another identical or reasonably equivalent product by calling our Consumer Service Center toll-free at **1-800-726-0190**. Cuisinart will be responsible for the cost of such repair, replacement,

and/or shipping and handling for such nonconforming products under warranty.

THIS LIMITED WARRANTY GIVES YOU SPECIFIC LEGAL RIGHTS, AND YOU MAY ALSO HAVE OTHER RIGHTS THAT VARY FROM STATE TO STATE OR BY JURISDICTION. IN THE EVENT THIS LIMITED WARRANTY IS BREACHED, YOU MAY HAVE CLAIMS FOR REPLACEMENT, DAMAGES, OR OTHER PENALTIES.

#### LIMITATIONS OF LIABILITY/ADDITIONAL LIMITATIONS AND EXCLUSIONS

ALL EXPRESS AND IMPLIED WARRANTIES ARE LIMITED IN DURATION TO THE LIMITED WARRANTY PERIOD. NO WARRANTIES APPLY AFTER THAT PERIOD. SOME STATES (OR JURISDICTIONS) DO NOT ALLOW LIMITATIONS ON HOW LONG AN IMPLIED WARRANTY LASTS, SO THIS LIMITATION MAY NOT APPLY TO YOU. CUISINART'S RESPONSIBILITY UNDER THIS OR ANY OTHER WARRANTY, IMPLIED OR EXPRESS, IS LIMITED TO REPAIR, REPLACEMENT, OR REFUND, AS SET FORTH ABOVE. THESE REMEDIES ARE THE SOLE AND EXCLUSIVE REMEDIES FOR ANY BREACH OF WARRANTY. TO THE MAXIMUM EXTENT PERMITTED BY LAW, CUISINART IS NOT RESPONSIBLE FOR ANY DIRECT, INDIRECT, SPECIAL, INCIDENTAL, OR CONSEQUENTIAL DAMAGES RESULTING FROM ANY BREACH OF WARRANTY OR UNDER ANY OTHER LEGAL THEORY (INCLUDING, BUT NOT LIMITED TO, LOST PROFITS, DOWNTIME, LOSS OF GOODWILL, DAMAGE TO OR REPLACEMENT OF EQUIPMENT AND PROPERTY, AND ANY COSTS OF RECOVERING, REPROGRAMMING, OR REPRODUCING ANY PROGRAM OR DATA STORED IN OR USED WITH A SYSTEM CONTAINING THE PRODUCT), EVEN IF CUISINART HAS BEEN ADVISED OF THE POSSIBILITY OF SUCH DAMAGES. SOME STATES DO NOT ALLOW THE EXCLUSION OR LIMITATION OF INCIDENTAL OR CONSEQUENTIAL DAMAGES, SO THE ABOVE LIMITATIONS OR EXCLUSIONS MAY NOT APPLY TO YOU. ALL EXPRESS AND IMPLIED WARRANTIES ARE LIMITED IN DURATION TO THE LIMITED WARRANTY PERIOD. NO WARRANTIES APPLY AFTER THAT PERIOD. SOME STATES (OR JURISDICTIONS) DO NOT ALLOW LIMITATIONS ON HOW LONG AN IMPLIED WARRANTY LASTS, SO THIS LIMITATION MAY NOT APPLY TO YOU.

This Limited Warranty is issued by:

Conair LLC  
1 Cummings Point Road  
Stamford, CT 06902  
1-800-726-0190





©2025 Cuisinart  
Glendale, AZ 85307

Printed in China  
25CE200375

G IB-18598