

# Assembling the F701



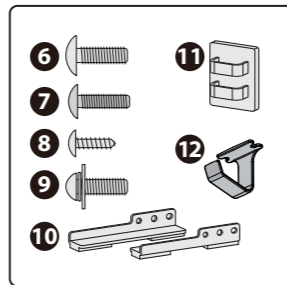
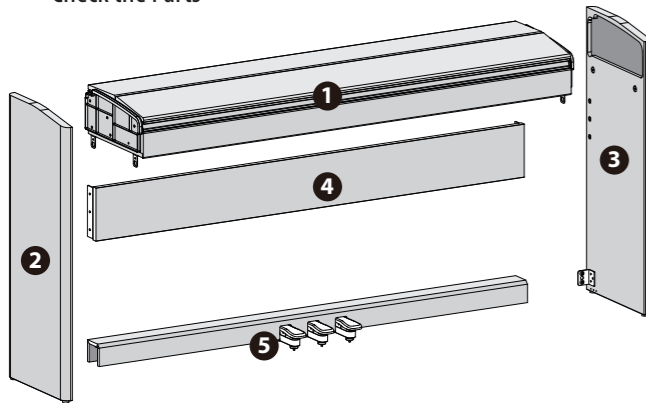
To assemble this product correctly, carefully read these instructions before assembly. Keep these instructions nearby so that you can immediately refer to them when necessary.

## Caution when assembling the unit

- Make sure that another person is on hand to help with the assembly and setup.
- Lift the piano carefully—all the while keeping it level.
- Prepare an area in which you can perform the assembly safely.
- If necessary, spread out a blanket or similar material to prevent the piano or floor from being scratched during assembly.
- Place the unit at a location that is level and sure to remain stable. The unit must never be placed on top of deep-pile carpet. Otherwise, you risk causing damage to the pedals due to instability and unnecessary movement.
- Make sure to keep screws and any other small parts in a safe location that is out of the reach of small children, so such small parts won't accidentally get swallowed.
- Be very careful, when you assemble and move the piano, to make sure that you do not drop it on your hands or feet.
- Do not use a power tool (e.g., an electric screwdriver) to assemble the piano. You risk damaging or stripping the screws.
- All screws should be tightened provisionally first, then tightened later. To tighten a screw provisionally, screw it in until about half of its length is no longer visible. For a successful assembly, compensate for any warping while you tighten the screws.
- Be careful not to pinch the pedal cord during assembly.
- Do not place the piano main unit directly on the floor. Doing so will damage the bottom panel case and the connectors on the bottom of the piano main unit.



## Check the Parts



- 1 Piano main unit
- 2 Side board (left)
- 3 Side board (right)
- 4 Rear board
- 5 Pedal board
- 6 Screws (6 x 18 mm): 6 pcs.
- 7 Screws (5 x 20 mm): 6 pcs.
- 8 Screws (4 x 14 mm): 6 pcs.
- 9 Screws (4 x 16 mm): 2 pcs.
- 10 Stabilizers (left/right)
- 11 Cord clamp: 2 pcs.
- 12 Headphone hook: 1 pc.

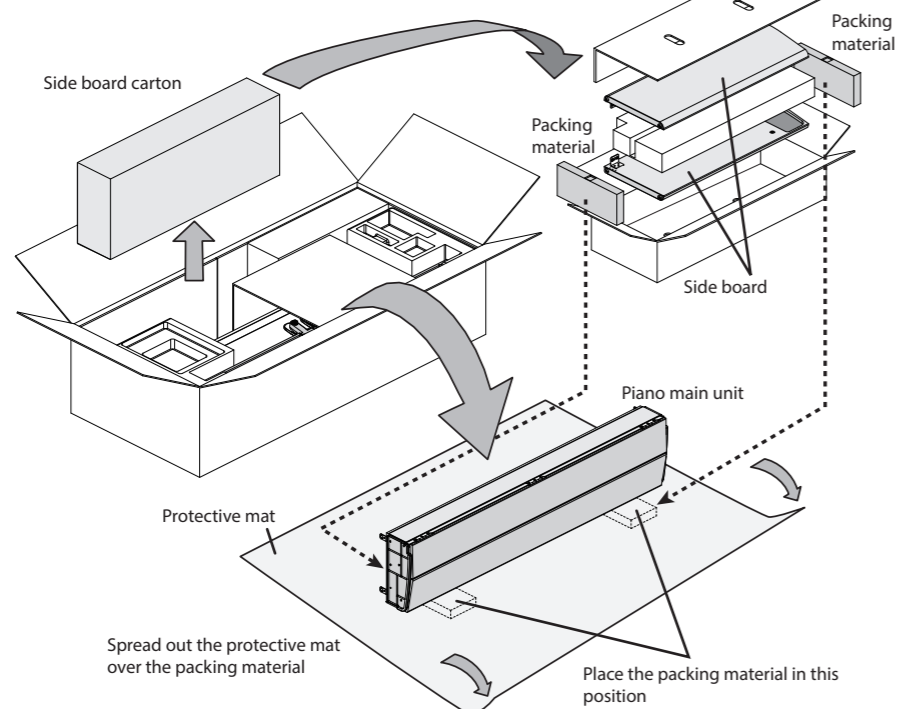
1. Remove the side board carton, and remove the left and right side boards 2 3 and the packing material.
2. Place the packing material on the floor as shown in the illustration.
3. Remove the piano main unit 1, and stand it up on top of the packing material that you placed on the floor.

\* When you stand the piano main unit on top of the packing material, leave in place the protective mat that surrounds the piano main unit.

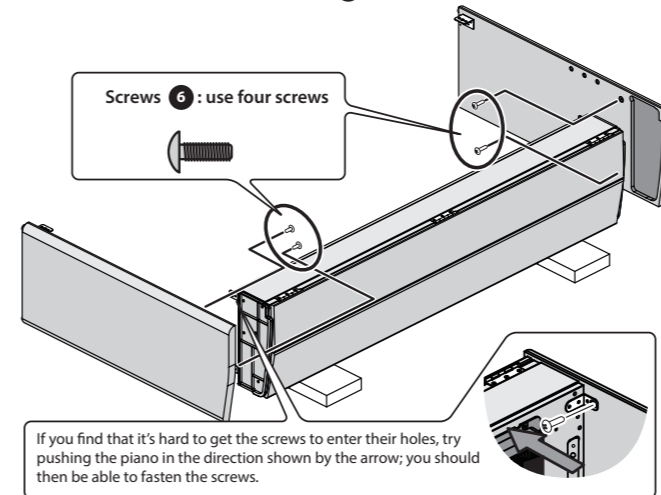
4. Remove the protective mat that surrounds the piano unit, and spread it out as shown in the illustration.

\* Until you connect the pedal cord (step 10), do not remove the protective sheet that is wrapped around the piano main unit. If this sheet is removed, the keyboard keyboard cover will open during assembly, causing danger.

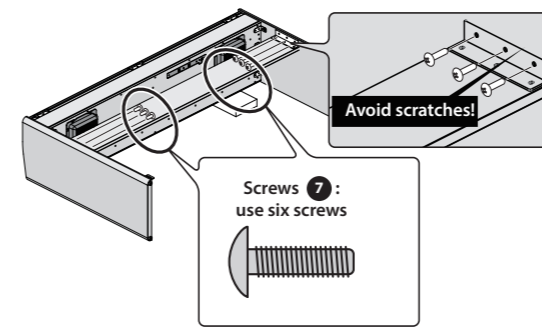
\* Do not grasp the keyboard cover when you lift the unit.



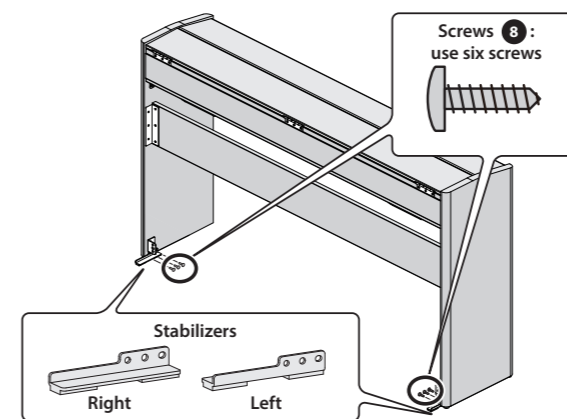
5. Attach the side board (right) 3 and side board (left) 2 to the piano main unit, and use the screws 6 to fasten them provisionally.



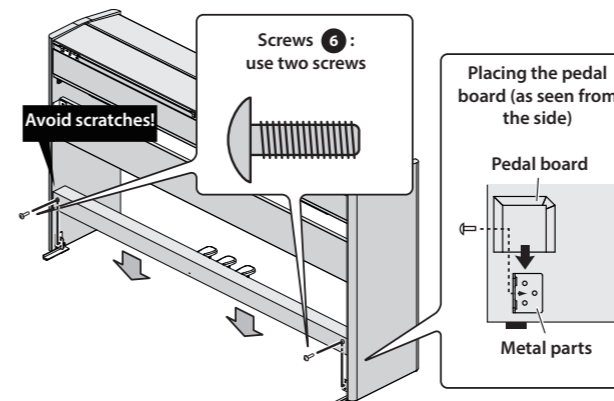
6. Attach the rear board 4 to the side boards, and use the screws 7 to fasten it provisionally.



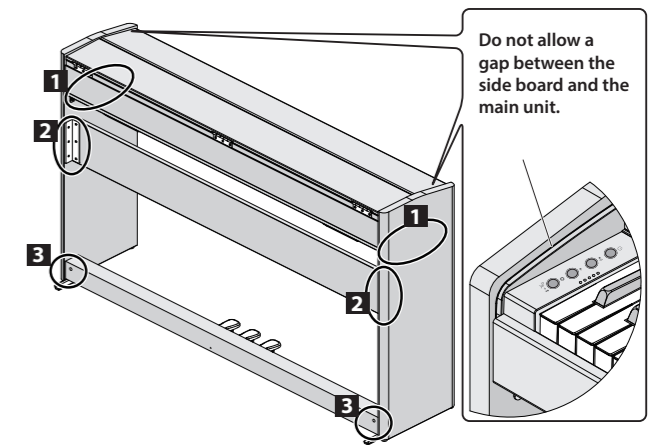
7. Place the unit upright, and attach the stabilizers to the side boards.
  - \* Securely fasten the stabilizers to their final tightness at this time.



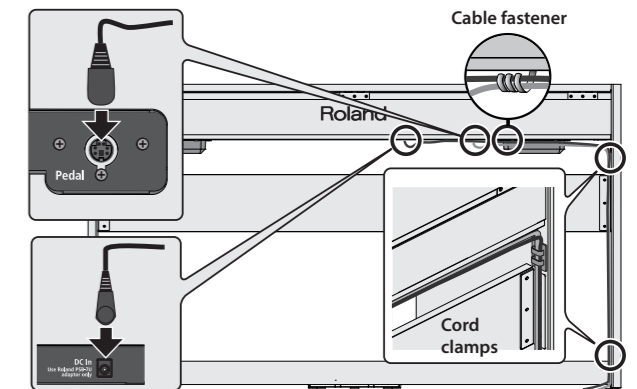
8. Attach the pedal board 5, and provisionally fasten it using the screws 6.



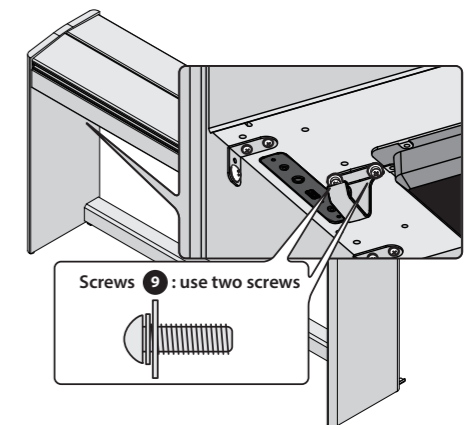
9. Securely tighten each screw (twelve locations) in the order of the side boards, rear board, and pedal board.



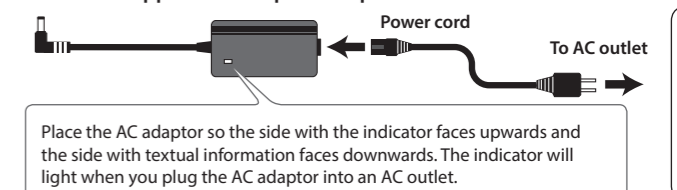
10. Connect the AC adaptor to the DC In jack of the piano main unit, and connect the pedal cord to the Pedal jack. Attach the cable fastener (one location) to the bottom of the main unit and the cord clamps (two locations) to the side board, and use them to secure the pedal cord and the AC adaptor cord.



11. Use screws 9 to fasten the headphone hook 12.



12. Connect the supplied AC adaptor and power cord.



## When moving or transporting

If you need to move the unit, close the keyboard cover and disconnect the AC adaptor. With at least one other person helping you, lift the unit horizontally and carry it, taking care not to pinch your hands or drop the unit on your feet.